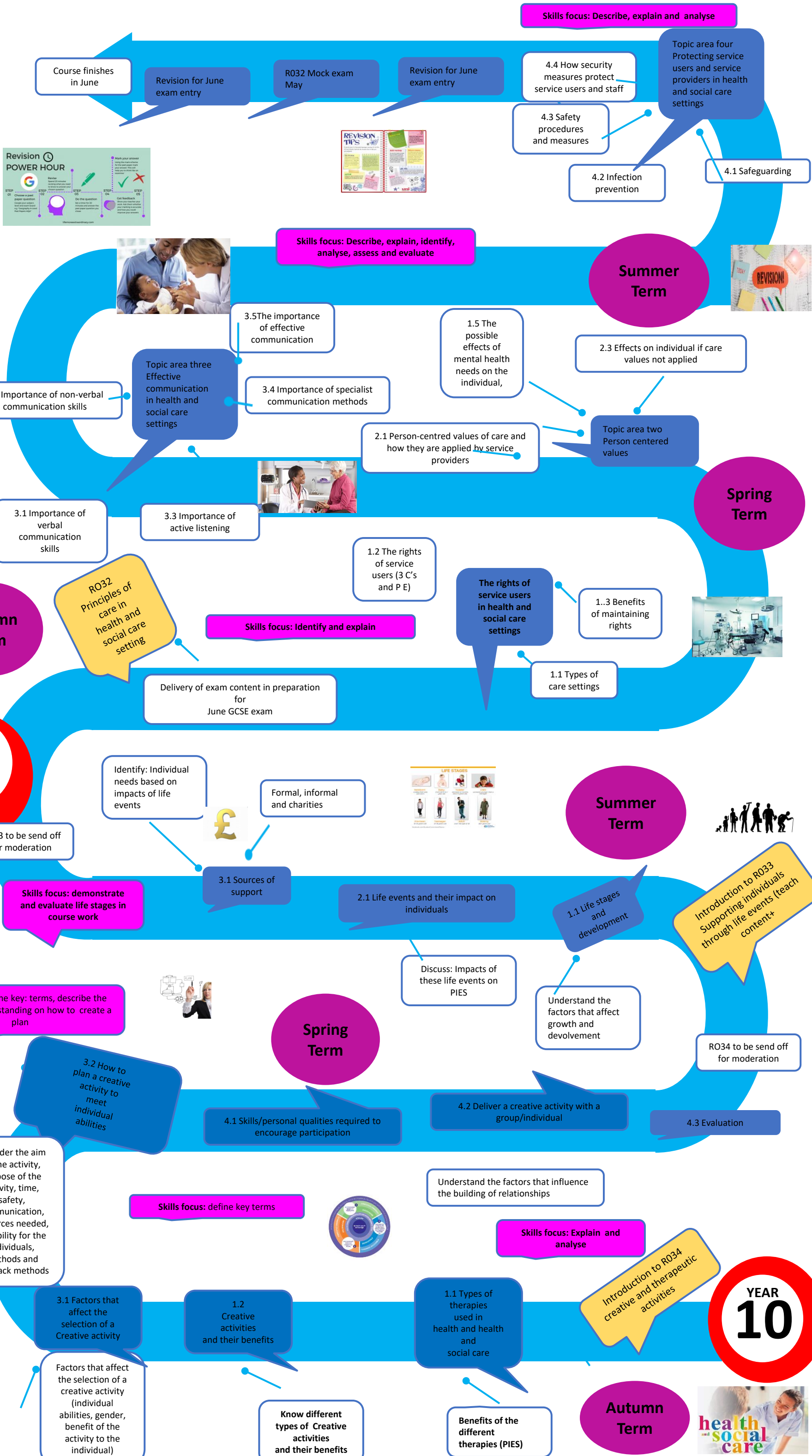


OCR Technical Health and Social Care Learning Journey

Course consists of 3 units.
Units RO34 and RO35 are coursework units.
Units RO32 is external examinations.

Order of delivery
Year 10 –RO34 and RO35
Year 11 – RO32



OCR Technical Health and Social Care Learning Journey

Course consists of 6 units.
Units 1, 17 and 24 are coursework units.
Units 2, 3 and 4 are external examinations.

Order of delivery
Year 12 – units 1, 2 and 3
Year 13 – units 4, 17 and 24

